

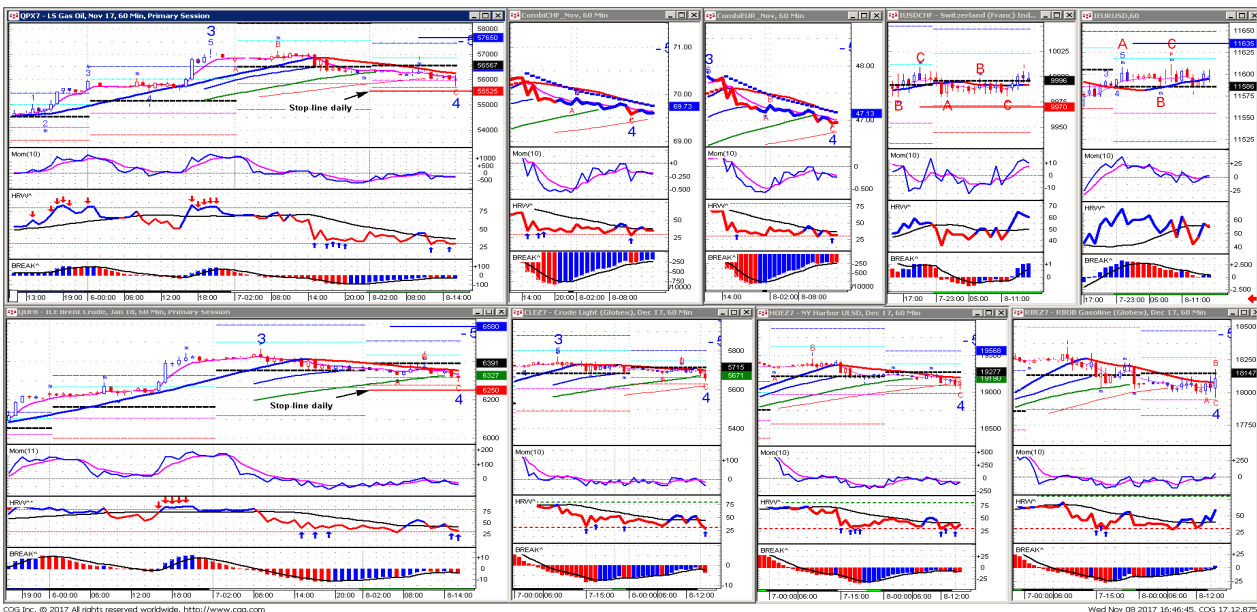
DOE-Zahlen / Chiffres DOE

08.11.2017

(amerikanische Bestandszahlen in Mio Barrels) / (stocks américains en mio de barils)

	Situation 03/11/2017	± Vorwoche ± sem. passée	API	04/11/16	Ø 5 Jahre ans	Erwartung Estimations
	DOE	DOE	API	DOE		
Distillates	125.562	-3.359	-3.1	148.602	128.5	-2.5 / +1.5 Ø-1.2
Gasolines/Essence	209.537	-3.312	+0.5	220.963	210.0	-3.2 / ± 0 Ø-1.8
Crude	457.143	+2.237	-1.6	484.974	398.2	-5.0 / +2.0 Ø-2.1
	792.242	-4.434		854.539	736.7	
Crude prod. fracking mbpd / incl. Alaska	9.111 9.620	+0.065 +0.067		8.115 8.692		
Cushing	64.559	+0.720	+0.8	58.980		
Raff.Kap. / Cap. raff.	89.6%	+1.5%		87.1%		-0.5/+0.6% Ø +0.2%
Production Distillates*	5.199	+0.163		4.784		
Production Gasolines*	10.167	-0.020		10.456		
Crude imports *	7.377	-0.194		7.442		
Exports Crude*	0.869	-1.264		0.410		
Exports products*	4.985	-0.560		4.480		
Gasoline imports* *=mbpd	0.405	-0.135		0.500		
SPR	669.906	-0.681		695.089		
Nachfrage/demande Distillates *	4.486	+0.952		Ø 4 weeks 2016 4.015		
Nachfrage / demande Gasolines *	9.496	+0.035		Ø 4 weeks 2016 9.078		
Nachfrage / demande All products* * = mbpd	21.301	+2.117		Ø 4 weeks 2016 20.064		

COMBI	CHF					Euro				
	Price	Momen- tum	HRW	BREAK	TOTAL	Price	Momen- tum	HRW	BREAK	TOTAL
Weekly	5>21 2+	>0 2+	++ 2+	HAUSSE 2+	8 / 8	5>21 2+	>0 2+	++ 2+	HAUSSE 2+	8 / 8
Daily	5>21 2+	>0 2+	++ 2+	HAUSSE 2+	8 / 8	5>21 2+	>0 2+	++ 2+	HAUSSE 2+	8 / 8
60'	5<21 2-	<0 2-	-- 2-	Hausse 1+	5 / 8	5<21 2-	<0 2-	-- 2-	Hausse 1+	5 / 8



Symbol	Description	LTS	High	Low	NLTT	TMLTT	PCNLQ	TCV	YCV
IUSDCH	Switzerland (Franc) Index	9999p	10005	9980	+1	16:49	0.01		
IEURUS	Euro / United States Index	11598p	11611	11584	+11	16:49	0.09		
IEURCH	Euro / Switzerland Index	11598p	11602	11574	+14	16:49	0.12		
QPX7	LS Gas Oil, Nov 17	55925	56450	55750	-425	16:49	-0.75	31492	47857
QPZ7	LS Gas Oil, Dec 17	55925	56450	55775	-400	16:49	-0.71	75189	133862
QPF8	LS Gas Oil, Jan 18	56075	56575	55950	-375	16:49	-0.66	52212	89215
QPG8	LS Gas Oil, Feb 18	56075	56575	56000	-375	16:49	-0.62	23620	32149
QPH8	LS Gas Oil, Mar 18	56000	56450	55875	-325	16:49	-0.67	11552	21874
QPJ8	LS Gas Oil, Apr 18	55850	56225	55725	-300	16:49	-0.58	4988	10194
QOF8	ICE Brent Crude, Jan 18	6302	6386	6295	-67	16:49	-1.05	249228	434261
QOG8	ICE Brent Crude, Feb 18	6282	6360	6276	-65	16:49	-1.04	151282	250986
HOEZ7	NY Harbor ULSD, Dec 17	19095	19285	19041	-124	16:49	-0.63	15305	78217
HOEF8	NY Harbor ULSD, Jan 18	19144	19328	19093	-129	16:49	-0.68	6035	53547
RBEZ7	RBOB Gasoline (Globex), Dec 17	18064	18180	17963	-89	16:49	-0.49	31979	86332
RBEF8	RBOB Gasoline (Globex), Jan 18	17813	17910	17749	-120	16:49	-0.66	29677	68520
CLEZ7	Crude Light (Globex), Dec 17	5645	5714	5644	-75	16:49	-1.33	335726	750187
CLEF8	Crude Light (Globex), Jan 18	5669	5737	5668	-74	16:49	-1.29	102449	248337
NGEZ7	Natural Gas (Globex), Dec 17	3178	3190	3114	+26	16:49	0.82	82975	247518